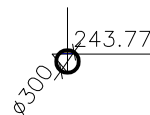
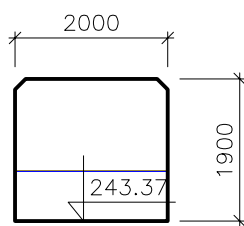


P 41 km 1,520 38 - ZATRUBNĚNÍ 2,0x1,9 + D300 DL. 334,6m

M 1:100/100

$Q_{100} = 0,06 \text{ m}^3 \cdot \text{s}^{-1}, 244,04 \text{ m n. m.}$
 $Q_{20} = 0,06 \text{ m}^3 \cdot \text{s}^{-1}, 244,03 \text{ m n. m.}$
 $Q_5 = 0,05 \text{ m}^3 \cdot \text{s}^{-1}, 244,02 \text{ m n. m.}$



S.R. - 241,00
